

Lightweight Enterprise Architecture Framework (LEAF)

Aligning Business and IT

The Problem

A complex web of legacy silos, disparate systems, redundant functionality and excess capacity prevent companies from achieving the agility and flexibility needed to respond to market demands.

The Solution

Lightweight Enterprise Architecture Framework (LEAF): A comprehensive methodology and toolset that captures the essential data to help organizations accelerate the planning and requirements analysis of business process transformation, core system renewal and consolidated reporting solutions

Vision for the Future

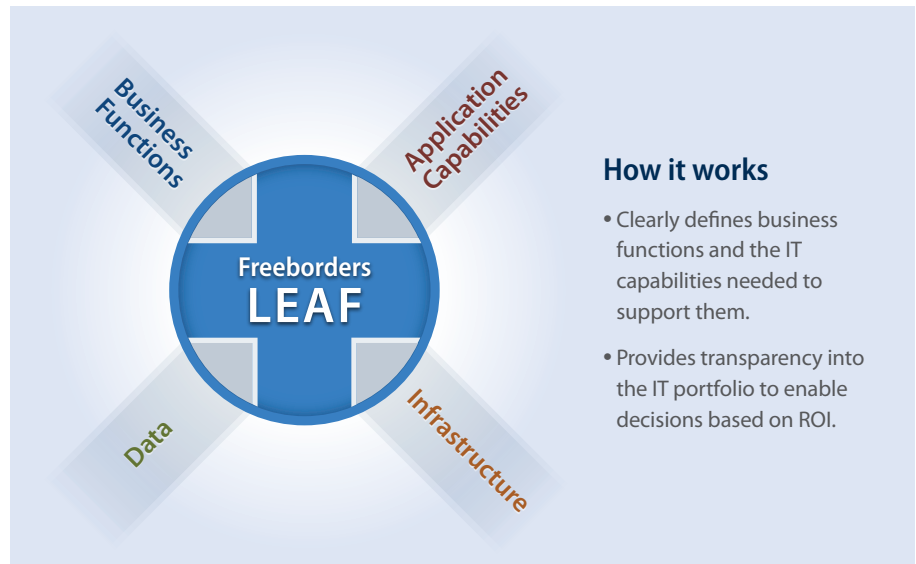
We are now in a new economic era of business management. Many organizations are struggling to get credit and at the same time, banks need to manage risk and comply with the new regulatory directives. The playing field has changed forever. As a result, companies have begun to reexamine ways they can respond to their customer base.

Often, complexity, disparate systems, redundant functionality and excess capacity prevent companies from achieving the agility and flexibility needed to respond quickly. This complexity results in redundant processes, excess costs and an inability to leverage and retrieve critical information when and where it's needed.

These complex silos and systems must be simplified and establishing a common framework and language of the business concepts, standards, and data definitions is certainly the goal. Yet while that may be the goal, there are many steps involved, and the questions are where and how do I get started?

That's where the Freeborders Lightweight Enterprise Architecture Framework (LEAF) comes in. LEAF enables business and IT to understand and agree on how technology can effectively support the business. Unlike many large enterprise architecture analysis projects, the LEAF framework and toolset allows for an incremental approach for defining an enterprise architecture allowing you to move at a pace that fits your environment.

It reinforces the proven business knowledge and best practices required to support critical business issues and ensure that IT projects are linked with business requirements. In addition, it provides a common blueprint for re-engineering, broadening and standardizing core business processes or implementing new business processes.



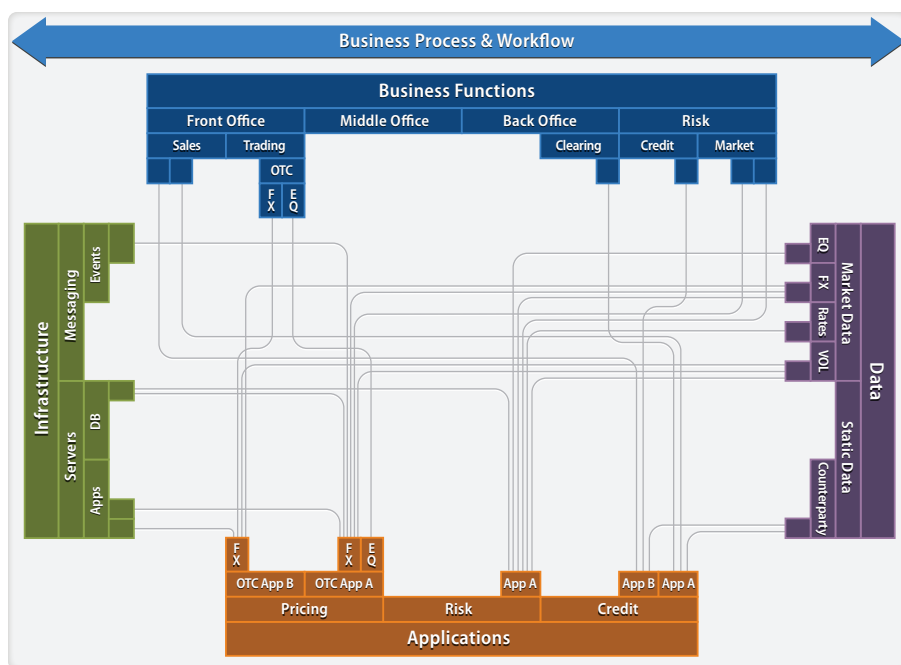
How it works

- Clearly defines business functions and the IT capabilities needed to support them.
- Provides transparency into the IT portfolio to enable decisions based on ROI.

Business and IT Alignment

LEAF enables business and IT to understand and agree upon how technology can effectively support the business through capabilities mapping. Specifically, it enables analysts and developers to capture business requirements – identifying the appropriate approach into an underlying integration structure. Capabilities mapping defines the relationship between business and IT to support:

- More effective communication between business and IT
- Project analysis, requirements and architecture validation
- Increased transparency and ability to make decisions
- Optimization & cost reduction of IT platform architecture & operations
- RFP generation, requirements development, change management, release and test planning
- Planning & execution of mergers and acquisitions
- Documentation for regulation, compliance and audit
- Standards and governance



How can LEAF help?

The truth is that while they are often called by different names, many business services have essentially the same purpose. LEAF's process, framework and tools enables you to identify common functions and capabilities that help you streamline processes across the organization, eliminating redundancies, while enabling you to:

Deliver a consistent customer experience across channels	Decrease IT costs needed to support disparate processes
Establish standards and best practices consistently across the organization	Facilitate regulatory efforts with policies and regulations

LEAF Industry Advantage

Proven – One of the world's leading providers of financial services to institutional investors uses the LEAF in various facets of their business-driven IT strategies, such as implementation of LEAN initiatives, and re-platforming and introduction of new lines of business for Global Markets and Securities Finance areas.

Business Ready – The framework is proven to foster collaboration and approval between business and IT, as necessary, to turn business requirements into actionable solutions.

Comprehensive – Freeborders' average of 20+ years of industry expertise and experience defining reference and business architectures derived from multiple engagements – is turned into a proven methodology and models that require minimal customization.

Summary

By unlocking information contained in individual applications and repositories from a variety of silos and making it readily available to people and processes that need it, LEAF can create a foundation for future projects, help you respond to (and comply with) regulatory and compliance requirements and enhance your clients' experience.

For more information

To find out how Freeborders can help you create value by leveraging IT to solve your key strategic business challenges, contact us at:

Call +001-800-769-0056
or visit www.freeborders.com

About Freeborders

Freeborders is a leading provider of information technology & consulting services focused in the financial services and internet e-commerce markets.

Whether delivering our services onsite with our clients or from one of our offshore development centers in China, our flexible engagements allow our customers to cost-effectively adapt their business to new market opportunities.

Headquartered in San Francisco, the company has offices in New York, Denver, London, Hong Kong, Shenzhen, Wu Xi and Kuala Lumpur.

Freeborders, Inc.
150 Spear Street
Suite 850
San Francisco, CA 94105 U.S.A.